

# KASIMU EDUCATION FUND

1667 Springer Road, Mountain View, CA 94040

(650) 968-0723

[rburnsmv@gmail.com](mailto:rburnsmv@gmail.com)

<http://www.kefmalawi.com>

December 11, 2017

Dear KEF Supporters,

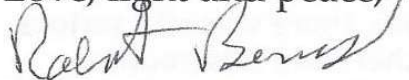
I want to again thank you for your generous and continuing assistance which supported our efforts to improve education and life in rural Malawi, Africa.

In this annual report I have attempted to present a pictorial history of our efforts at the Kasimu Schools, since 2005. We have provided photos of our progress over the past fourteen years. None of this would have been accomplished without the interest and generosity of you and all the donors who have supported KEF.

We believe our initial goals of improving education will be reached in 2018 with the construction of teachers homes and funding programs for the secondary school. KEF will assist the Kasimu schools to develop programs capable of providing basic needs and improvements, without charity. KEF will be assisting the schools during 2018 by supporting new fund raising and management programs to maintain these programs transferable to other schools.

KEF is exploring the possibility of providing assistance to Mother Mary's Children Centers which serve one thousand orphans many of which are HIV positive. We are evaluating this program and will notify you of any programs we initiate to serve these orphans and students in Chikwawa.

Love, light and peace,



Robert Burns, President, KEF

# Kasimu Education Fund History – 2005 to 2017

**No Classrooms for forms 1 to 4 in 2006  
(Classrooms being constructed at rear of photo)**



**KEF Formed in El Cerrito – 2005  
Fr. Peter Mulomole & Mary Burns**



**2006 – Teacher/Student Ratio = 100/1**



**2008 – Two Elementary School Buildings  
Funded by KEF & Powered by Solar Panels**



**In 2006 when KEF first visited Malawi, the first four grades of the Kasimu Primary School did not have classrooms. KEF funded the construction of two school buildings with four classrooms and solar power. However, there was still serious overcrowding in classrooms due to a need for more teachers and classrooms**

# Improvements since 2005

**2016 - 18 teachers received certification via scholarships from KEF  
They are now teaching at Kasimu schools  
Student/teacher ratio: 50/1**



**2015 Kasimu Secondary School Building #2 and #3**



**2016 Kasimu Secondary School Building #4**



**Manyesa Mlaivwa – Kasimu graduate, scholarship to nurses college, currently  
charge nurse at Blantyre Hospital Emergency**





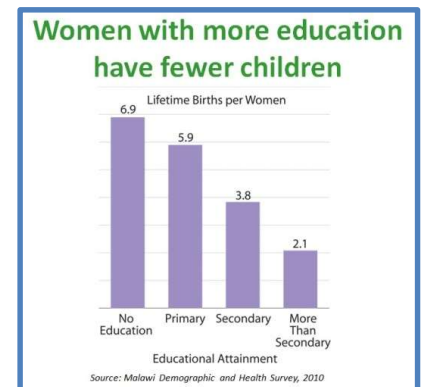
# Kasimu Education Fund

## Annual Report for 2017

According to the United Nations, the population of Africa is projected to more than double between 2017 and 2050. The population of Malawi is projected to grow from 18.6 million in 2017 to 41.7 million in 2050\*. Education is considered to be one of the primary solutions to the population expansion.

KEF's goal is to improve the quality and availability of education throughout Malawi starting with the Kasimu School in Malawi as a model.

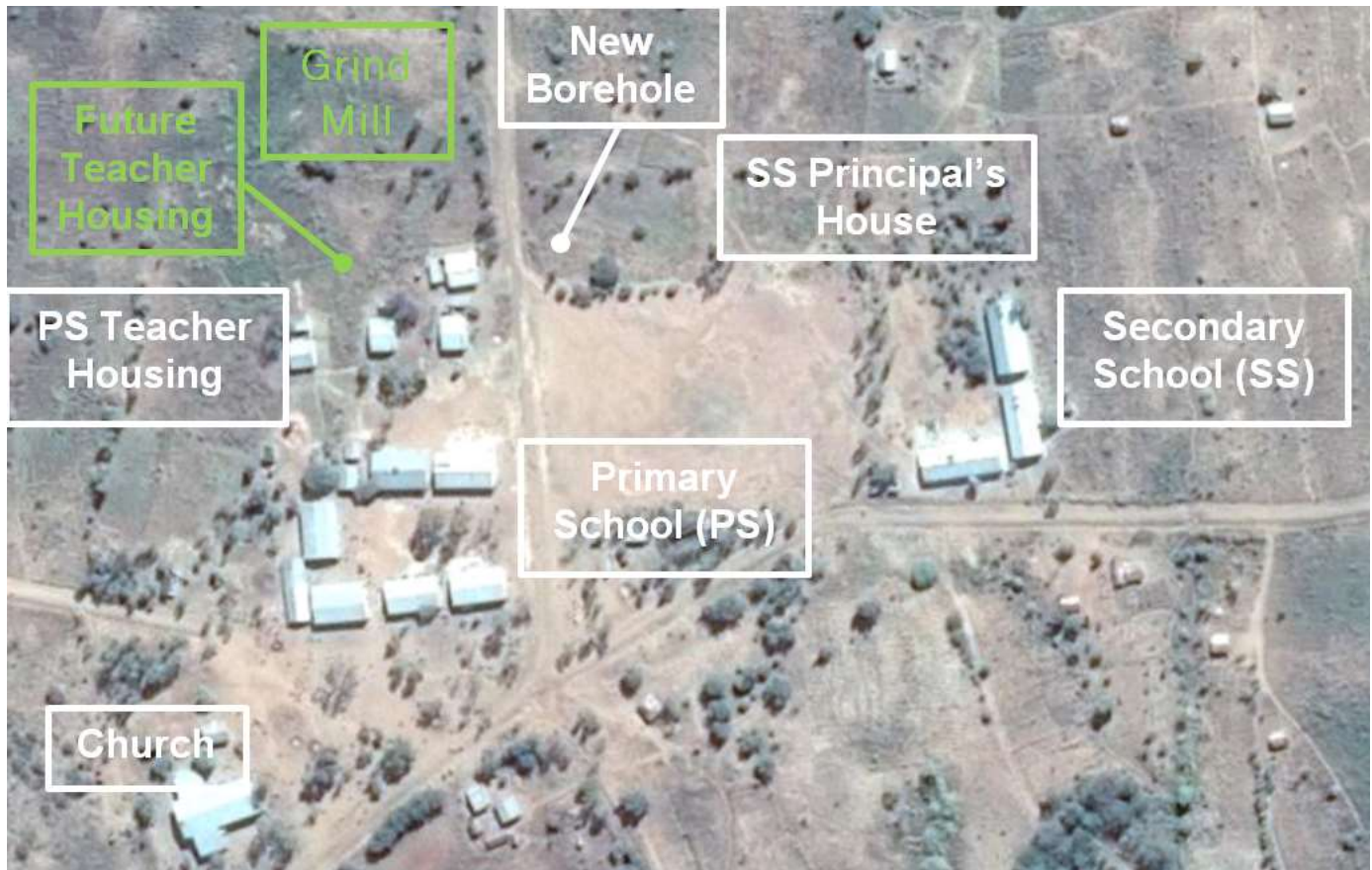
- The KEF Board of Directors would like to thank our benefactors for their generous donations supporting 14 years of efforts to improve education at the Kasimu School and assist the schools to become self-sufficient
- Special thank you to One-Dollar-for-Life, the Loyola, and the Katz Foundations
- Your donations have helped KEF provide the following benefits in 2017:
  - Phase I: Continuation of Financial Support
    - Stipends:
      - Pre-school: principals and teachers
      - Primary school: principals, teachers, and teacher assistants
      - Secondary school: principals and teachers
    - Salaries: food guards and food managers
    - Meals
      - Pre-school
      - Primary School
    - Scholarships
      - 170 Secondary School scholarships
      - 18 teacher college students @ DAPP
      - 2 teacher college students @ Chiradulu
    - Secondary School
      - Delivered 11 laptops to computer lab and set-up internet access
        - » Included a 1080p projector
        - » Included a WiFi router
        - » Allocated funds/ordered 50 student chairs and identified a manufacturer in Malawi
      - Provided 5 additional sewing machines for home economics lab
      - Allocated funds for Science/Chemistry lab



\*World Population Prospects The 2017 Revision, United Nations, New York, 2017

# Kasimu School

Latitude = 15.654688°S, Longitude = 35.451620°E



**Secondary School Building #3  
Computer Lab**



**Secondary School Principal's house  
construction nearing completion**

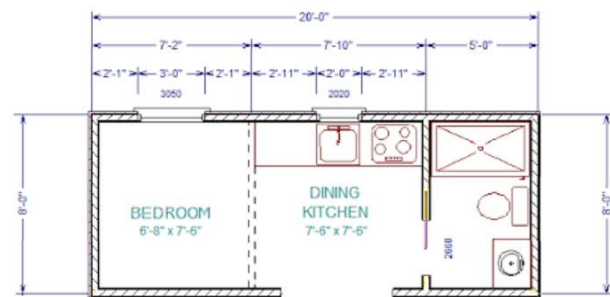
# Agriculture and grind mill parcels, laptops, and teacher housing



**Parcel of land identified for agriculture program was donated by the Mulomole Family. The parcel outlined in yellow above is  $\frac{3}{4}$  mile from the Kasimu School campus shown in lower left of picture above. Grind mill may also be located on this parcel.**



**12 laptops prepared for transport to Kasimu Secondary School computer lab**



**Pilot program to explore conversion of 20' shipping containers to teacher housing**

# Kasimu Education Fund

## Proposal for 2018

Donations in 2018 will help the Kasimu School to achieve self-sufficiency in this second and final phase of this Kasimu school project

- Phase II: Kasimu school self-sufficiency
  - Continuation of Kasimu school financial support
    - Stipends:
      - » Pre-school: principals and teachers
      - » Primary school: principals, teachers, and teacher assist's
      - » Secondary school: principals and teachers
    - Salaries: food guards and food managers
    - Meals: pre-school and primary school students
      - » Added: meals for secondary school students
    - Scholarships (continued from 2017)
      - » 170 - Secondary school students
      - » 18 – Teacher college students @ DAPP
      - » 2 – Teacher college students @Chiradulu
  - Generation of Revenue
    - Construct maize grind mill
      - » Parcel of land identified (page 6)
    - Develop agricultural program to grow crops in the dry season
      - » Parcel of land identified (page 5 and 6)
  - Science lab
    - Purchase required lab materials and equipment
    - Purchase tables and cabinets for science lab
  - Build on-site teacher housing for 15 teachers (page 6)
    - Pilot program to convert one shipping container to housing
  - Days-for-Girls – Partner for feminine hygiene apparel
    - Purpose: encourage young women to attend school
    - Initially, feminine hygiene apparel will be purchased (\$10/ea)
      - » Purchased from: <http://www.daysforgirls.org>
    - Develop student capability to sew feminine hygiene apparel



## Mfera Primary School

2,125 students in need of 580 desks and 14 additional classrooms



Latitude = 16.05922°S , Longitude = 34.86011°E



## Mother Mary's Children Center in Chikwawa, Malawi

300 orphans attend pre-school, 15 are full-time residents



Housing for full-time residents





# Chikwawa Project

Following the success of the Kasimu Phase I project, KEF is planning to extend the lessons learned to the pre-school and primary schools in Chikwawa, Malawi

- Phase I
  - The Mfera primary school in Chikwawa has 2125 students, 27 teachers, and 13 classrooms
    - Student/teacher ratio = 78/1
    - There is a deficit of 14 classrooms
      - Goal: build 14 classrooms possibly using re-purposed shipping containers
    - 560 desks are required (2 students/desk)
  - Mother Mary's Children Center
    - Provide financial aid for completion of a solar-powered submersible pump well/water-tower to provide water to the pre-school and Mfera primary school in Chikwawa
    - Construction of additional preschool classroom and cafeteria
  - Mother Mary's Scholarships
    - 23 students requiring assistance with tuition for the summer semester (January to March)
  - Build Mother Mary's girls Secondary School (high school)